



# Intel® Memory and Storage Tool (Intel® MAS)

## Installation Guide

---

*May 2024*

**Revision 012US**



**Notice: This document contains information on products in the design phase of development. The information here is subject to change without notice. Do not finalize a design with this information.**

Intel technologies' features and benefits depend on system configuration and may require enabled hardware, software, or service activation. Learn more at [intel.com](http://intel.com), or from the OEM or retailer.

No computer system can be absolutely secure. Intel does not assume any liability for lost or stolen data or systems or any damages resulting from such losses.

You may not use or facilitate the use of this document in connection with any infringement or other legal analysis concerning Intel products described herein. You agree to grant Intel a non-exclusive, royalty-free license to any patent claim thereafter drafted which includes subject matter disclosed herein.

No license (express or implied, by estoppel or otherwise) to any intellectual property rights is granted by this document. The products described may contain design defects or errors known as errata which may cause the product to deviate from published specifications. Current characterized errata are available on request.

This document contains information on products, services and/or processes in development. All information provided here is subject to change without notice. Contact your Intel representative to obtain the latest Intel product specifications and roadmaps.

Intel disclaims all express and implied warranties, including without limitation, the implied warranties of merchantability, fitness for a particular purpose, and non-infringement, as well as any warranty arising from course of performance, course of dealing, or usage in trade.

Tests document performance of components on a particular test, in specific systems. Differences in hardware, software, or configuration will affect actual performance. Consult other sources of information to evaluate performance as you consider your purchase. For more complete information about performance and benchmark results, visit <http://www.intel.com/performance>.

Cost reduction scenarios described are intended as examples of how a given Intel-based product, in the specified circumstances and configurations, may affect future costs and provide cost savings. Circumstances will vary. Intel does not guarantee any costs or cost reduction.

Results have been estimated or simulated using internal Intel analysis or architecture simulation or modeling and provided to you for informational purposes. Any differences in your system hardware, software or configuration may affect your actual performance.

Intel does not control or audit third-party benchmark data or the web sites referenced in this document. You should visit the referenced web site and confirm whether referenced data are accurate.

Copies of documents which have an order number and are referenced in this document may be obtained by calling 1-800-548-4725 or by visiting [www.intel.com/design/literature.htm](http://www.intel.com/design/literature.htm).

Intel and the Intel logo are trademarks of Intel Corporation in the U.S. and/or other countries.

\*Other names and brands may be claimed as the property of others

Copyright © 2022, Intel Corporation. All Rights Reserved.

# Contents

---

<b>1</b>	<b>Introduction .....</b>	<b>5</b>
1.1	Requirements .....	5
1.2	Additional Installer Notes.....	5
<b>2</b>	<b>Windows* Installation and Startup.....</b>	<b>6</b>
2.1	Installing the Intel® MAS Tool .....	6
2.2	Downloading the Intel® MAS Tool.....	6
2.3	Installing the Intel® MAS Tool .....	6
2.4	Launching the Intel® MAS Tool .....	6



## Revision History

Revision Number	Description	Date
012US	<ul style="list-style-type: none"><li>Intel® MAS Version 2.5 Windows installer bug fix</li></ul>	May 2024
011US	<ul style="list-style-type: none"><li>Intel® MAS Version 2.4 Added ESXi* 8.0 U.2 to the supported OS list in System Requirements</li></ul>	April 2024
010US	<ul style="list-style-type: none"><li>Intel® MAS Version 2.3<ul style="list-style-type: none"><li>Added firmware updates for Intel® Optane SSD DC P4800X/P4801X/D4800X series, Intel® Optane™ SSD 905P/900P series and Intel® Optane™ Memory H20 Series.</li><li>Bug fix</li></ul></li></ul>	December 2023
009US	<ul style="list-style-type: none"><li>Intel® MAS Version 2.2<ul style="list-style-type: none"><li>Added ESXi* 8.0 to the supported OS list in System Requirements</li></ul></li></ul>	December 2022
008US	<ul style="list-style-type: none"><li>Intel® MAS Version 2.1</li><li>Updated Solidigm* links in installer, Graphic User Interface (GUI), and Command Line Interface (CLI)</li></ul>	July 2022
007US	<ul style="list-style-type: none"><li>Removed Intel® NAND Flash Memory related features</li></ul>	May 2022
006US	<ul style="list-style-type: none"><li>Updated Supported OS List in Requirements</li></ul>	October 2021
005US	<ul style="list-style-type: none"><li>Added section for Ubuntu* installation</li></ul>	May 2021
004US	<ul style="list-style-type: none"><li>Added Support for ESXi* 7.0.2</li></ul>	April 2021
003US	<ul style="list-style-type: none"><li>Updated Supported Operating Systems in Section 1.1</li></ul>	January 2021
002US	<ul style="list-style-type: none"><li>Added Windows Server* 2019 as supported operating system in Section 1.1</li></ul>	June 2020
001US	<ul style="list-style-type: none"><li>Initial Release</li></ul>	January 2020

# 1 *Introduction*

---

This document provides guidance for installing the Intel® Memory and Storage Tool (Intel® MAS) software for the Windows\*, Linux\* and ESXi\* operating systems.

## 1.1 Requirements

The Intel® MAS Tool is supported on the following:

- Operating systems on x86/x64 Architecture:
  - Windows\*:
    - Windows Server\* 2008 R2, 2012, 2012 R2, 2016, 2019, 2022
    - Windows\* 8.0, 8.1, 10, 11
  - Linux\*:
    - Red Hat Enterprise Linux\* (RHEL\*) 8.0, 8.1, 8.2, 8.3, 8.4
    - CentOS\* 8.0, 8.1, 8.2, 8.3, 8.4
    - SUSE Linux Enterprise Server\* (SLES\*) 12, 15
    - Ubuntu\* 16.04, 18.04, 20.04
  - ESXi\*:
    - ESXi\* 6.5, 6.7, 7.0.0, 7.0.1, 7.0.2, 7.0.3, 8.0
- Available space of 400 MBs

## 1.2 Additional Installer Notes

Review the following notes regarding Intel® MAS Tool Requirements:

- Earlier OS Versions not listed in supported list are generally expected to work but are not actively validated and not officially supported.

## 2 *Windows\* Installation and Startup*

---

Download the Windows\* version of Intel® MAS and save it to the system with the Intel® SSD you will be configuring with the Intel® MAS Tool.

### 2.1 Installing the Intel® MAS Tool

### 2.2 Downloading the Intel® MAS Tool

1. Go to the Intel support website by clicking [here](#).
2. Chose Run to begin immediately installing the application, or you can Save the Intel® MAS application (.exe file) to a folder on your computer.

### 2.3 Installing the Intel® MAS Tool

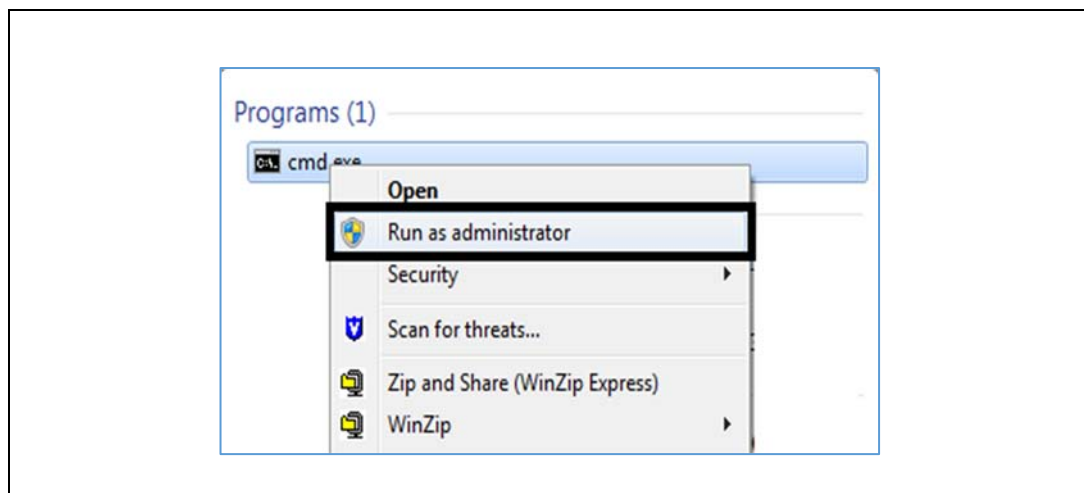
1. Double-click the downloaded .exe file to start the Intel® MAS setup wizard (skip if you chose **Run** from step 2 mentioned previously).
2. Click **Next** on the Welcome screen.
3. Click **Install** to begin the installation process.
4. Once the installation is complete, check the box if you want the application to load after completion.
5. Click **Finish**.

The Intel® MAS Tool installs at the default location: Program Files\Intel\Intel(R) Memory and Storage Tool\

### 2.4 Launching the Intel® MAS Tool

To launch the Intel® MAS Tool software, do the following:

1. Type **cmd** in the Windows\* search field to show the cmd.exe program
2. Right click to open the menu and select **Run as administrator**.



3. In the MS\_DOS prompt window, you can either type change to the directory where the files were exacted (for example, C:\Program Files\Intel\Intel Memory and Storage Tool\)
4. Run the intelmas command.

Launch it as a single command by supplying the command and parameters immediately following the executable name.

```
intelmas show -intelssd
```

For a description of the command options and features, see the *Intel® Memory and Storage Tool User Guide*, document number 342245.